



LC6B with I300MB lamp installed*

LC6B-2*

Heraeus Noblelight LC6B & LC6B-2 Benchtop Conveyor

The LC6B/LC6B-2 Benchtop Conveyor is a UV curing unit that is suitable for laboratory and R&D applications. It can also be used in testing of adhesives, inks and coatings for qualification, cure response testing, or performance evaluation. It can handle a variety of substrates up to 190.5 mm (7.5 inches) wide with an effective curing width up to 152 mm (6 inches). The lightshield entry/exit doors are adjustable to accommodate differing part heights. The focus height (lamp to belt) can be adjusted to a maximum of 3 inches.

With the compact Heraeus Noblelight model F300S or Light Hammer 6 MARK II lamp system, the LC6B/LC6B-2 offers an ideal curing system for small production parts.

LC6B – A unique and simple mechanism allows the lamp to be rotated and set to any angle to part travel, or raised and lowered to vary its distance from the part.

LC6B-2 – Only has vertical adjustment.

The LC6B and LC6B-2 use air flowing through the belt to provide cooling and to help keep small sheets or parts in place throughout the curing process. An internal exhaust blower assists with cooling. An external blower is required for specific configurations.

The specially designed open-weave Kevlar® belt is Teflon® coated for smooth performance, and treated to eliminate static charges. The unique seam design provides an essentially uninterrupted belt surface.

There is a choice of 4 models and speed ranges from 0.6 to 76 meters-per-minute (2.0 to 250 feet-per-minute).

A convenient lamp control switch is also located on the front panel, with a zero-speed sensor incorporated, to provide lamp control and protection for the belt.

*For more information about the lamp systems, refer to the F300S and Light Hammer 6 MARK II Sales Bulletins. Lamp requires: 200–240 V. Lamp system sold separately.

Specifications: LC6B & LC6B-2

Weight: Without lamp: 25 kg (55 lbs.).

Overall Length: 1,070 mm (42 in.).

Overall Width: 510 mm (20 in.).

Overall Height: Without lamp: 310 mm (12.2 in.); with lamp: 695 mm (27.4 in.).

Nominal Width: 152 mm (6 in.).

Lamp Position:

LC6B: Rotatable, 360°; vertical adjustment from focus at belt surface to 76.2 mm (3.0 in.), beyond focus.

LC6B-2: Vertical adjustment only up to 76.2 mm (3.0 in.), beyond focus.

Lamp Types: F300S or LH6 MARK II.

Exhaust Blower: Included – internal or external optional.*

Belt: Teflon®-coated 6.35 mm (.25 in.) weave Kevlar® fiber, carbon-impregnated, with conductive (anti-static) coating and unique fold-back loop seam, standard.

Direction of Belt Travel: Right-to-left, standard; opposite available.

Speed Indicator: Digital, in m/min. or ft./min.

Speed Ranges: Four options available. See Table 1.

Power: 115/230 VAC, single phase, 50/60 Hz, internally selected. IEC-style power connection with power switch.

Drive: PMDC gearmotor; synchronous belt drive; interchangeable pulleys provide two ranges for each model, low speed and standard speed.

Controls: Power on/off, speed adjust, lamp on/off.

Interconnections: Lamp on/off (incorporates zero-speed switch).

Fasteners: Metric.

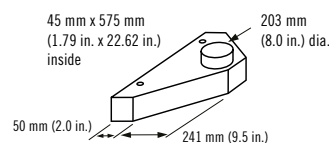
Exhaust Duct Transition

- Connects rear exhaust to 203 mm (8.0 in.) diameter duct (not included).

- Can be installed upward or downward.

- Material: 1.524 mm (0.060 in.) aluminum.

This aluminum duct transition can be screwed to the rear of the conveyor housing to exhaust the cooling air up or down and away from the immediate work vicinity. It prevents cooling air from blowing directly onto other workers, thus improving the work environment. A 203 mm (8.0 in.) diameter duct (not included) can be connected.*



*Certain system configurations may require external exhaust blower.

Available Belts

- Teflon®-coated 6.35 mm (.25 in.) weave Kevlar® fiber, carbon-impregnated, with conductive (anti-static) coating and unique fold-back loop seam, standard.
- Teflon®-coated 6.35 mm (.25 in.) weave Kevlar®, with conductive (anti-static) coating, and a 76 mm (3 in.) wide tight-weave center strip for small parts; fold-back loop seam.
- Flexible stainless steel belt, Teflon® slider guides, and roller modifications. Available as a retrofit kit. (Not for use with standard slider bed. NOTE: Conveyor must be modified to use this belt).
- Teflon®-coated 1.59 mm (.0625 in.) glass weave; fold-back loop seam.

Other Accessories / Options

Recommended: Snap-on end light shields. Choose from top-access or end-access styles.

- Exhaust Duct Transition
- Quartz Plate Air Deflectors
- External End Reflectors
- Left-to-right Belt Travel (opposite direction)
- Special Belts for Small Parts
- Stainless Steel Mesh Belt
- Adaptable to Hold 2 Lamps (without rotatable feature)
- Outfeed Catch Tray
- Part Removal Tool

Table 1

Speed ranges available on the LC6B/LC6B-2 are as follows:

0.6–2.2 m/min. (2.0–7.2 ft./min.)

1.0–7 m/min. (3.3–23 ft./min.)

5–23 m/min. (16–75 ft./min.)

15–76 m/min. (50–250 ft./min.)

Contact your local Heraeus Noblelight office for an engineered solution for your specific requirements.

Accessories for LC6B & LC6B-2

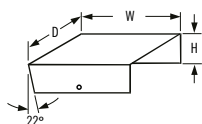
Snap-in Lightshields

These grey tinted, polycarbonate lightshields require no tools to install – simply snap into place on either end of the conveyor. Available in either tunnel (end-access) or box end (top-access) styles, these lightshields improve worker safety in situations where there is prolonged use at eye-level or when taller parts are being cured, which requires the internal adjustable shields to be lifted, increasing the amount of UV escaping into the work area.

Tunnel Style Shield:

Material: GE #713 'grey' tint polycarbonate, 3 mm (.125 in.) thick.

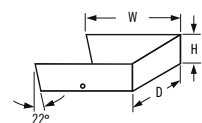
Dimensions: 229 mm (9.0 in.) wide x 76 mm (3.0 in.) high x 198 mm (7.8 in.) deep.



'Box End' Style Shield:

Material: GE #713 'grey' tint polycarbonate, 3 mm (.125 in.) thick.

Dimensions: 229 mm (9.0 in.) wide x 83 mm (3.25 in.) high x 198 mm (7.8 in.) deep.



heraeus-noblelight.com

Germany
Heraeus Noblelight GmbH
 Heraeusstraße 12-14
 63450 Hanau
 Phone +49 6181 35 4499
 Fax +49 6181 35 9926
 hng-uv@heraeus.com

USA
Heraeus Noblelight America LLC
 910 Clopper Road
 Gaithersburg, Maryland
 20878-1357
 Phone +1 301 527 2660
 Fax +1 301 527 2661
 info.hna.uvp@heraeus.com

Japan
Heraeus K.K.
 Noblelight Division
 Sumitomo Fudosan Otowa
 Building 1F, 2F, 5F
 2-9-3 Otsuka, Bunkyo-ku
 112-0012, Tokyo
 Phone +81 3 6902 6602
 Fax +81 3 6902 6613
 info.hkk@heraeus.com

China
Heraeus Noblelight (Shenyang) Ltd.
 Shanghai Branch
 2F, 5th Building, No. 406 Guilin Rd
 Xuhui District
 Shanghai 200233, P.R. China
 Phone +86 21 3357 5555
 Fax +86 21 3357 5333
 info.hns@heraeus.com

